

4 930E Dump truck

5 PC4000 Hydraulic excavator

Climb up the stairs, sit in the driver's seat, and experience the power of these machines. In Japan, these can only be found here.



Onboard experience 930E and PC4000, super large construction equipment

[April-November] 10:00-11:00, 15:00-16:00
[December-March] 10:00-10:30, 15:00-15:30

*May be cancelled due to bad weather such as heavy rain and at the time of maintenance / inspection
*Over 95 cm in height [Babies and toddlers under 95 cm must be in a back-mounted baby carrier of a parent or guardian]

6 Komatsu Memorial Area

Six of the actual construction machines that are the backbone of Komatsu's history are on display here. Some of the machines are registered by the prefectural government as "Ishikawa Manufacturing Industrial Heritage".



7 House of Insects

Take an up-close look at the ecology of the creatures that live in Komatsu no Mori.



8 Genki Satoyama Park

Satoyama, which is a recreation of the natural environment of the Kaga region, provides a rich seasonal display that we can see for ourselves throughout the year. The stream flows through the Satoyama and hosts a variety of insects and their larvae, birds, and other creatures, giving you a chance to view the various local flora and fauna.



Here's a space for your memorial rubber stamp!

Information

Komatsu no Mori

[Closed] Year-end and New Year holidays

[Opening Hours] 9:00 - 17:00

Waku-Waku Komatsu History Museum, Kids Pavilion and Future Museum House of Insects

[Closed] Sundays, Mondays, the 5th Saturday of each month. Please check our website regarding national holidays.

[Open Hours] 9:00-16:30
(last entry at 16:00)

[Admission] Free

[Access]

1-minute walk from JR Komatsu Station East Exit
Approx. 8-minute drive from Hokuriku Expressway Komatsu IC
Approx. 10-minute drive from Komatsu Airport

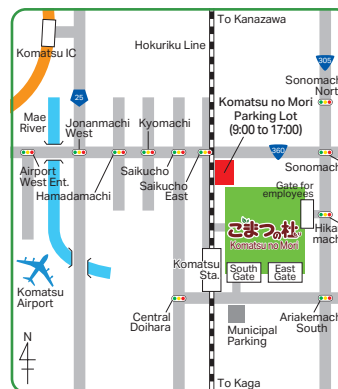
[Parking Lot]

■ Open Hours: 9:00-17:00

After 17:00, the exit doors will be locked. Please note that the next opening will be at 9:00 on the following day.

■ Capacity: Approx. 50 regular-size cars including 1 small-size bus. Spaces for medium and large-size buses are unavailable.

■ Free parking



[Group Tours]

Reservations are required for groups of 10 or more. Please apply via the website. We do not accept any package tour groups organized by travel agencies or group tours organized by accommodation facilities. The number of participants should be reported when you book.

Komatsu no Mori



Komatsu no Mori

1 Komatsunomori, Komatsu City, Ishikawa Pref. 923-8666
TEL : 0761-24-2154 FAX : 0761-24-2164



2024.8.10000

Komatsu no Mori Map



- 1 Waku-Waku Komatsu History Museum
- 2 Waku-Waku Komatsu Kids Pavilion
- 3 Waku-Waku Komatsu Future Museum

Komatsu no Mori

Komatsu no Mori was founded in May 2011 to commemorate the 90th anniversary of Komatsu's founding. The facilities operate for the purpose of fostering the healthy development of children.



Statue of Meitaro Takeuchi

In 1860, the founder of Komatsu (Komatsu Ltd.) was born in the current Sukumo city in Kochi prefecture. Komatsu Ltd. was established in 1921 in the Yokachimachi district of Komatsu city (presently Komatsunomori). He is known as one of the founders of the Japanese machinery industry.

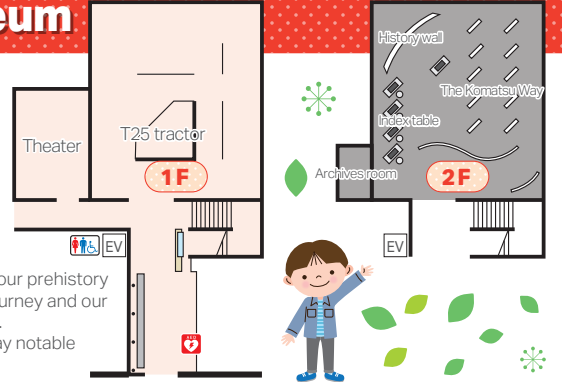


1 Waku-Waku Komatsu History Museum

This two-story building is the restored former head office building of Komatsu Co. On the 1st floor are exhibitions and a theater showing the whole picture of Komatsu's 100-year history, from its founding to today. On the 2nd floor, you will be introduced to the Komatsu Way and can dig into each historical topic.



The wall exhibits depict our prehistory through our 100-year journey and our prospects for the future. The center panels display notable events from each era.



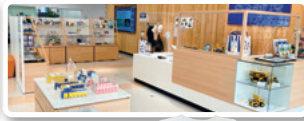
2 Waku-Waku Komatsu Kids Pavilion

Local cedar wood is used for the building. There are experience-based playsets to help children get to know Komatsu technology and a kids' corner where smaller children can play with soft building blocks to make construction machines. Children can also try on Komatsu Co. work clothes and pictures can be taken here.



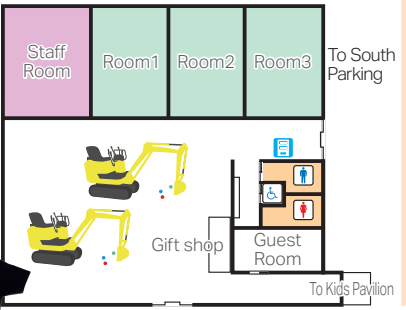
3 Waku-Waku Komatsu Future Museum

Here visitors can experience operating mini excavators, as well as enjoy participating in science classes, experiments and other events in the multipurpose rooms. Orientations for group tours are also held.



Gift shop

The shop offers original merchandise that can't be found anywhere else, so please be sure to pick something up as a memento of your visit or for souvenirs to give your family or friends.



Mini Excavator Square

Try operating real mini excavators to scoop up balls!

Operation Hours:
[Wednesdays & Saturdays]
14:00-15:00



To Visitors

- The facilities are wheelchair accessible. Wheelchairs are available on a first-come, first-serve basis.
- Please smoke only in the designated area.
- When accompanied by pets except guide dogs, service dogs and hearing dogs, please ensure that they are in a pet carrier with a lid and keep the lid closed in the park.
- No alcoholic beverages are allowed; No visitors under the influence of alcohol are allowed.
- Please eat and drink outside, or inside the Kids Pavilion.
- No trash cans are provided. Please take your trash with you.