

**Demonstration Models**

Both are among  
**the largest  
in Japan**

**Demonstrating superior work efficiency  
and used actively around the world**

Super-large  
hydraulic excavator

# PC4000

Its powerful excavating force is used in mines to extract minerals, earth, and sand, which is then loaded onto dump trucks and other transport vehicles. The PC4000, Komatsu's super-large domestically produced hydraulic excavator, is manufactured at Kanazawa Plant. It was transported to Komatsu no Mori in 2021 to celebrate the 100th anniversary of Komatsu's founding.



**In full 24-hour operation at large mines**

Super-large  
electric dump truck

# 930E

This "electric" dump truck uses a diesel engine that powers a generator, and the electricity created rotates a motor inside the rear wheels to provide driving power. It was manufactured at Komatsu America Peoria Plant in 2000. And after stints of roughly four years in the U.S. and six in Chile, it arrived here at Komatsu no Mori.



## PC4000 (The numbers in the tables are approximate.)

### ■ Vehicle specifications

Bucket capacity	22m <sup>3</sup>
Load capacity	40t <small>*Calculated with specific density of 1.8</small>
Vehicle weight	400t
Overall height	8m
Overall length	23m
Overall width	7m
Attachment	Backhoe type
Maximum speed	2.1km/h

### ■ Undercarriage

Overall length	9m
Overall height	2.5m
Overall width	1.2m

### ■ Engine

Total displacement	60 ℓ (60,000cc)
Horsepower	1,875HP
Type	4 Cycle
No. of cylinders	16
Rated capacity	1,400kW

### ■ Fuel Tank

Fuel	Light fuel
Capacity	6,400 ℓ
Fuel consumption	240-280 ℓ/h

### ■ Production & Operation

Production site	Komatsu Kanazawa Plant, Komatsu Germany
Number in Operation	160
Operation areas	Mines in the US, Australia, Chile, Canada, Brazil, Russia, etc.
Load	Coal, Copper, Iron ore, Gold, Diamonds, etc.

## 930E (The numbers in the tables are approximate.)

### ■ Vehicle specifications

Total weight	500t
Maximum load capacity	300t
Vehicle weight	200t
Overall height	7m
Overall length	15m
Overall width	9m
Total height with vessel (dump body) raised	14m
Maximum speed	65km/h

### ■ Tires

Weight	5t/tire
Diameter	3.8m
Overall width	1.3m
Load capacity	80t/tire
Manufacturer	Bridgestone Corporation
Production Site	Kitakyushu Plant

### ■ Engine

Total displacement	60 ℓ (60,000cc)
Horsepower	2,700HP
Type	4 Cycle
No. of cylinders	16
Rated capacity	2,014kW

### ■ Fuel Tank

Fuel	Light fuel
Capacity	4,542 ℓ
Fuel consumption	100-250 ℓ/h

### ■ Production & Operation

Production Site	Komatsu America Peoria Plant
Number in Operation	2,000
Operating areas	Mines in the US, Australia, Chile, Canada, Brazil, Russia, etc.
Load	Coal, Copper, Iron ore, Gold, Diamonds, etc.

**Meet the real machines  
with DANTOTSU  
quality and power**



Super-large  
hydraulic excavator  
**PC4000**



Super-large dump truck  
**930E**

## Komatsu no Mori

1 Komatsunomori, Komatsu City, Ishikawa Pref. 923-8666  
TEL: 0761-24-2154 FAX: 0761-24-2164



2024.8 ●●●●



The fuel tank has the capacity of **22.5** oil drums

Maximum load capacity of **Approx. 300t**



## Super-large dump truck **930E**

The number 930 represents its total weight (930,000 lbs.), while the letter E stands for "electric". The current weight has since increased due to technological advances.

### Production & Operation

Manufactured at Komatsu America Peoria Plant. There are currently over 2,000 units in operation around the world.

**Operation Sites** Mines in the US, Australia, Chile, Canada, Brazil, Russia, etc.

**Load** Coal, copper, iron ore, gold, diamonds, etc.



In full 24-hour operation at large mines

### Matching excavators for 930E

**PC7000** Bucket capacity **36m<sup>3</sup>** Load capacity (\*Calculated with specific density of 1.8) **Approx. 70t**

**PC8000** Bucket capacity **42m<sup>3</sup>** Load Capacity (\*Calculated at specific density of 1.8) **Approx. 80t**

## Super-large hydraulic excavator

# PC4000

The letters "PC" indicate that it is a crawler-type hydraulic excavator, while the numbers that follow indicate the vehicle weight.

### Production & Operation

Manufactured at the Komatsu Kanazawa Plant and at Komatsu Germany. There are currently about 160 units in operation around the world.

**Operation Sites** Mines in the US, Australia, Chile, Canada, Brazil, Russia, etc.

**Load** Coal, copper, iron ore, gold, diamonds, etc.



The demonstration model has a backhoe-bucket attachment.

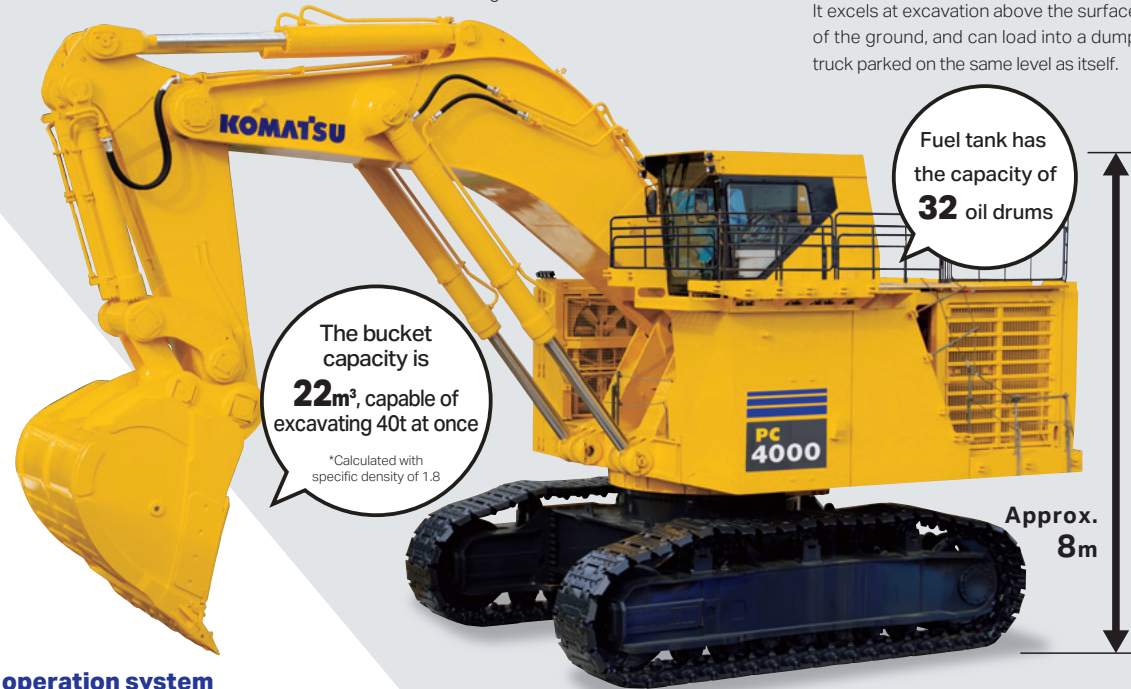
### Backhoe type

The bucket is mounted in a downward position, and it is operated by pulling it toward the operator, scooping up and holding the excavated material. It excels at excavation into the surface of the ground, and can load into a dump truck parked on lower ground than itself.



### Front shovel type

The bucket is mounted in an upward position and is operated in the direction of travel, excavating by pushing upwards. It excels at excavation above the surface of the ground, and can load into a dump truck parked on the same level as itself.



The bucket capacity is **22m<sup>3</sup>**, capable of excavating 40t at once

\*Calculated with specific density of 1.8

Fuel tank has the capacity of **32** oil drums

### Unmanned dump truck operation system

Automated, unmanned dump trucks are being used in mines all over the world. Unmanned dump trucks do not require an actual driver to be in the vehicle, which eliminates the risk of people being involved in accidents in the harsh mine conditions. Furthermore, automatic driving is a smooth process that also saves fuel and reduces wear on tires.

### Matching dump trucks for PC4000

<b>HD1500</b>	<b>730E</b>	<b>830E</b>
Maximum load capacity <b>Approx. 140t</b>	Maximum load capacity <b>Approx. 190t</b>	Maximum load capacity <b>Approx. 230t</b>

**One unit of each in Japan**

**See the actual vehicle from various angles, ride in it, and experience its power firsthand.**